



GREENCASTLE POLICE DEPARTMENT
REPORT FOR THE MONTH OF FEBRUARY, 2024

SUBMITTED April 1, 2024

During the month of February, the Police Department responded to or initiated **342** Calls for Service.

**Greencastle Police Department Complaint
Blotter By Complaint Type**

03/01/2024 00:00 - 03/31/2024 23:59

Complaint Type	Number of Complaints
P911HU / P911 HANG UP	2
PALMBA / PALARM BURGLAR	10
PANIMCP / PANIMAL COMP	2
PANMCP / PANIMAL COMPLAINT	1
PASTEM / PASSIST EMS	8
PASTO / PASSIST OTHER AGENCY	8
PBOLO / PBOLO	4
PCHCUS / PCHILD CUST PROB	2
PCHENA / PCHILD ENDGRMT N/A	1
PCHKAR / PCHECK AREA	9
PCIVIL / PCIVIL	1
PCRT / PCOUNTY COURT	2
PDCSD / PDECEASED PERSON	1
PDIRPAT / PDIRECTED PATROLS	76
PDISTN / PDIST/NOISE N/A	1
PDMV / PDIS VEH IN TRAFF	3
PDOM / PD0M	4
PDOMA / PDOM ACTIVE	1
PF4 / PHIT N RUN	1
PF5 / PWANTED/ESCAPE	1

PF7 / PBURGLARY	4
PFNDPR / PFOUND PROPERTY	8
PFOOTPAT / PFOOT PATROL	16
PFRD / PFRAUD	3
PFU / PFOLLOW UP	21
PHARA / PHARASSMNT ACTIVE	2
PINFO / PINATION	20
PLO / PLOCKOUT VEH/HOUSE	1
PMISC / PMISCELLANEOUS	1
PMVAPED / PPEDESTRIAN STRUCK CRASH	1
PNSEAV / PDIST/NOISE ACTV	1
POPEN / POPEN DOOR/WINDOW	1
PPKGCP / PPARKING COMPLT	12
PREDRA / PRECKLESS DRVR ACT	1
PRETPHO / PRETURNED PHONE CALL	42
PROADRAG / PROADRAGE	1
PSANA / PSUSP ACT NOT ACTV	1

**Greencastle Police Department Complaint
Blotter By Complaint Type**

03/01/2024 00:00 - 03/31/2024 23:59

Complaint Type Complaints	Number of
PSEXOF / PSEXUAL OFFENSES	1
PSUSA / PSUSP ACT/PERS ACT	4
PTANR / PNONREPORTABLE CRASH	4
PTAREP / PREPORTABLE CRASH	1
PTFT / PTHEFT	2
PTRAF / P TRAFFIC DETAIL	5
PTRHZD / PTRAFF HAZ ON ROAD	1
PTRNSPRT / PTRANSPORT PRISONER	1
PTRT / PTHREAT	1
PTS / PTRAFFIC STOP	36
PUNWANT / PUNWANTED PERSON	1
PVACNI / PVEH ACC NO INJ	1
PVEHFIRE / PVEHICLE FIRE	1
PWFCK / PWELFARE CHECK	6
UNASSIGNED	3

Total Complaints: **342**



The Greencastle Police Department had a total of 39 traffic stops.

7 Faulty Equipment Warnings issued.

0 Non-Traffic Citation issued.

23 Traffic Citations issued.

6 Written Warnings issued.

3 Verbal Warnings issued.

Overtime – 148 hours for manpower

Russell 72

McGarity 12

Brennan 53

Knopp 11

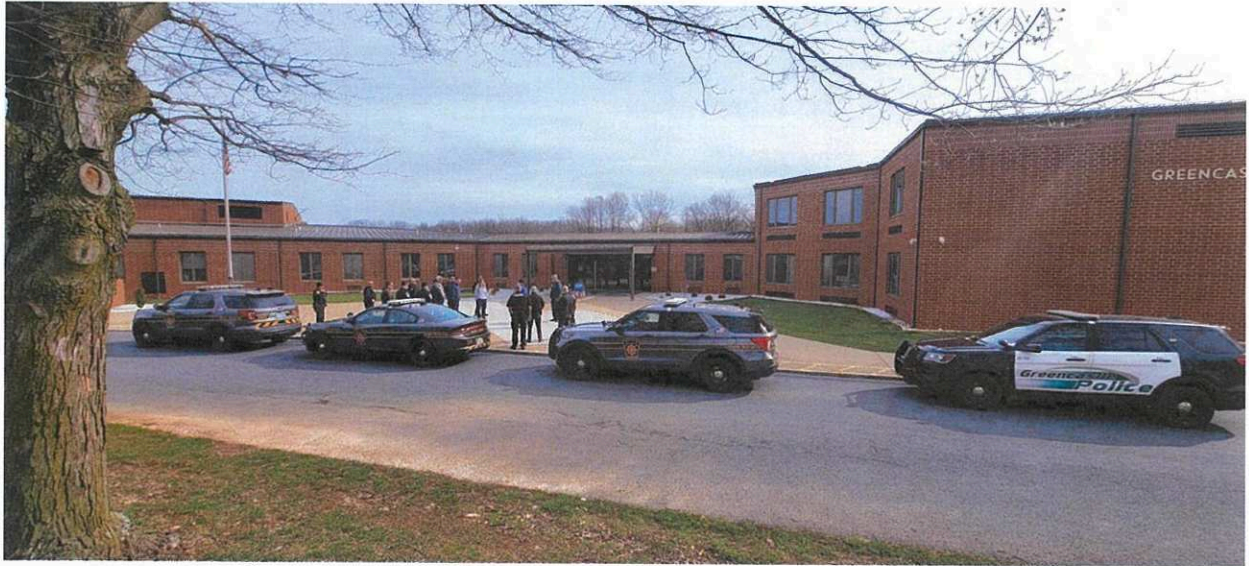
<u>Mileage -</u>	Car 802	2016 Ford Utility	49965	813
	Car 813	2013 Chevy Tahoe	106628	192
	Car 816	2016 Ford Utility	112377	358
	Car 819	2019 Ford F-150	91159	2259 Total:3622



The License Plate Reader has been installed into Unit 802. It has encountered some technical gremlins, and the installer is working on the car as we speak to fix the outstanding issues.

The Greencastle Police Dept. has received numerous complaints of Criminal Mischief occurring at Jerome King Playground. Officers have been directed to maintain a heavy presence at the park, to get out of the patrol cars and walk around the park and respond to any violations accordingly. GPD has advised park management to invest in surveillance cameras where the perpetrators can be recorded doing nefarious activities and they will assist in identification as well as prosecution.

We have been able to provide 24/7 coverage throughout the month of March despite having one full-time officer out on sick leave and the other staff shortages. The civil service exam was conducted, and we are awaiting the results.



On March 26 and 27th, Greencastle Police worked with the School Administration, School Police, PSP, Franklin County Sherrif's Department, fire and EMS to conduct "Intruder Drills" at each of the 4 schools on campus. This was an extremely important event designed to inoculate the children to such an event. The schools were briefed through the PA system and the school went into lockdown. From that point, the teachers made decisions to "Run, Hide, Fight". This meant some classrooms sheltered in-place without a word being said from the classrooms or the teachers making the decision to exit the classroom and get out of the building. This opened the school up to emergency responders who might have never set foot into the buildings to get the layout and physically tour each building.

Respectfully submitted,

Keith A. Russell

Officer in Charge, Keith A. Russell



Start: 2024-03-02

End: 2024-03-28

Times: 0:00:00-23:59:59

Violation Threshold: Speed Limit + 10

Speed Range: 1 to 150

Overall Summary

Total Days of Data: 25

Speed Limit: 25

Average Speed: 26.49

50th Percentile Speed: 27.12

85th Percentile Speed: 31.46

Pace Speed Range: 23-33

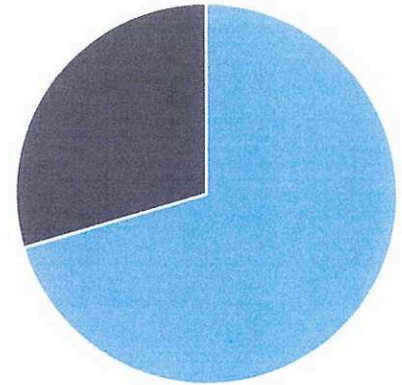
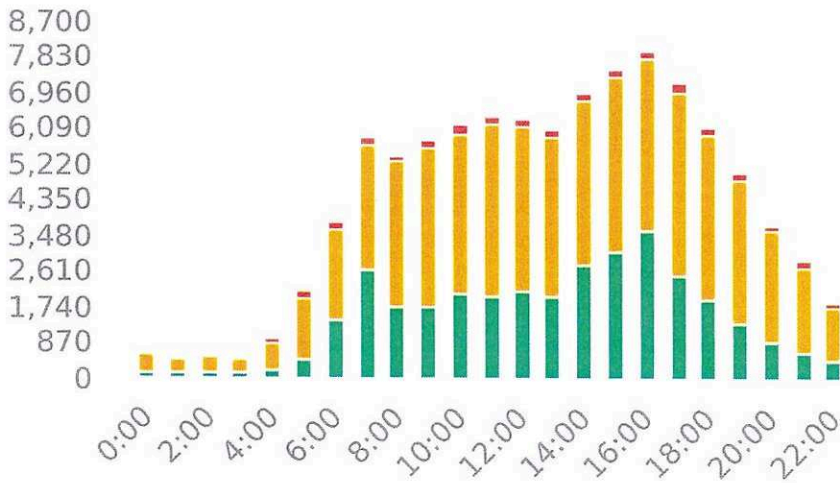
Minimum Speed: 5

Maximum Speed: 80

Display Mode: Speed Display

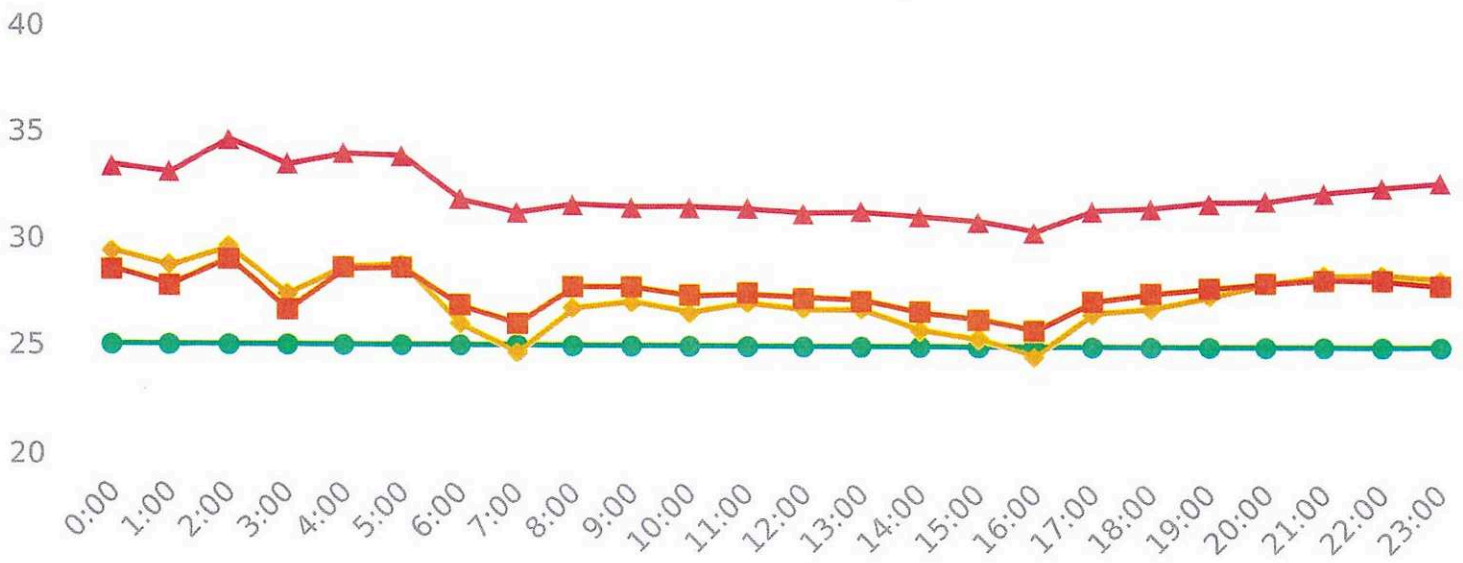
Average Volume per Day: 4066.4

Total Volume: 101661



● Violators ● Inside Threshold ● Compliant

● Vehicles Slowed ● Other



● Speed Limit ● Average Speed ● 50% Speed ● 85% Speed



Extended Speed Summary

E. Baltimore St, WB

Start: 2024-03-02

End: 2024-03-28

Times: 0:00:00-23:59:59

Violation Threshold: Speed Limit + 10

Speed Range: 1 to 150

Time	Sign Mode	Speed Limit	Total # Vehicles	Total # Violator	% Violator	Avg # Vehicles	Avg # Violators	Min Speed	Max Speed	Avg Speed	50% Speed	85% Speed	Sign Effectiveness
0:00	Speed Display	25	673	71	10.5%	29.3	3.1	5	66	29.3	28.5	33.3	67.8%
1:00	Speed Display	25	493	49	9.9%	21.4	2.1	7	62	28.6	27.7	33.0	61.7%
2:00	Speed Display	25	572	82	14.3%	26.0	3.7	9	80	29.5	29.0	34.6	64.6%
3:00	Speed Display	25	486	50	10.3%	21.1	2.2	5	80	27.3	26.6	33.4	65.5%
4:00	Speed Display	25	959	114	11.9%	41.7	5.0	5	48	28.6	28.5	33.9	70.0%
5:00	Speed Display	25	2152	212	9.9%	89.7	8.8	5	50	28.7	28.6	33.8	67.5%
6:00	Speed Display	25	3784	184	4.9%	157.7	7.7	5	59	25.9	26.8	31.8	70.7%
7:00	Speed Display	25	5890	201	3.4%	245.4	8.4	5	47	24.6	26.0	31.2	74.3%
8:00	Speed Display	25	5439	184	3.4%	226.6	7.7	5	46	26.7	27.7	31.6	69.1%
9:00	Speed Display	25	5790	212	3.7%	241.3	8.8	5	48	27.0	27.7	31.5	68.4%
10:00	Speed Display	25	6156	201	3.3%	256.5	8.4	5	45	26.5	27.3	31.5	69.1%
11:00	Speed Display	25	6356	199	3.1%	264.8	8.3	5	45	27.0	27.4	31.4	68.7%
12:00	Speed Display	25	6313	191	3.0%	274.5	8.3	5	50	26.7	27.3	31.2	69.9%
13:00	Speed Display	25	6049	170	2.8%	263.0	7.4	5	59	26.7	27.1	31.3	71.3%
14:00	Speed Display	25	6932	179	2.6%	301.4	7.8	5	48	25.7	26.5	31.0	70.2%
15:00	Speed Display	25	7528	163	2.2%	327.3	7.1	5	50	25.3	26.3	30.8	71.0%
16:00	Speed Display	25	7971	166	2.1%	346.6	7.2	5	63	24.5	25.7	30.4	73.7%
17:00	Speed Display	25	7201	210	2.9%	300.0	8.8	5	49	26.5	27.1	31.3	74.3%
18:00	Speed Display	25	6122	193	3.2%	255.1	8.0	5	47	26.7	27.4	31.5	73.7%
19:00	Speed Display	25	5026	180	3.6%	209.4	7.5	5	47	27.3	27.7	31.7	69.3%
20:00	Speed Display	25	3755	150	4.0%	156.5	6.3	5	52	27.9	27.9	31.8	66.0%
21:00	Speed Display	25	2883	159	5.5%	120.1	6.6	5	51	28.3	28.1	32.2	68.6%
22:00	Speed Display	25	1865	127	6.8%	77.7	5.3	6	62	28.3	28.1	32.4	64.6%
23:00	Speed Display	25	1266	81	6.4%	52.8	3.4	6	48	28.1	27.8	32.6	62.9%
Total Volumes/ Avg			101661	3728	3.7%	4305.8	157.9	5	80	27.2	27.4	32.0	68.9%
Total/Avg w/o Feedback			0	0	0	0.0	0.0	n/a	n/a	n/a	n/a	n/a	n/a
Total/Avg w/ Feedback			101661	3728	3.7%	4305.8	157.9	5	80	27.2	27.4	32.0	68.9%



Start: 2024-03-07

End: 2024-03-21

Times: 0:00:00-23:59:59

Violation Threshold: Speed Limit + 10

Speed Range: 1 to 150

Overall Summary

Total Days of Data: 15

Speed Limit: 25

Average Speed: 23.91

50th Percentile Speed: 24.48

85th Percentile Speed: 30.51

Pace Speed Range: 20-30

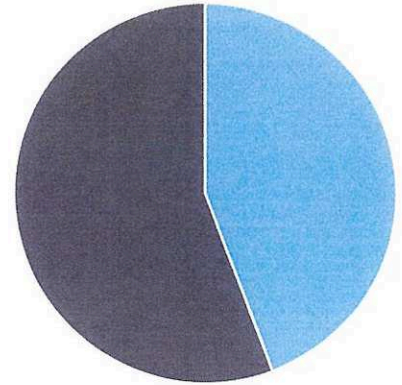
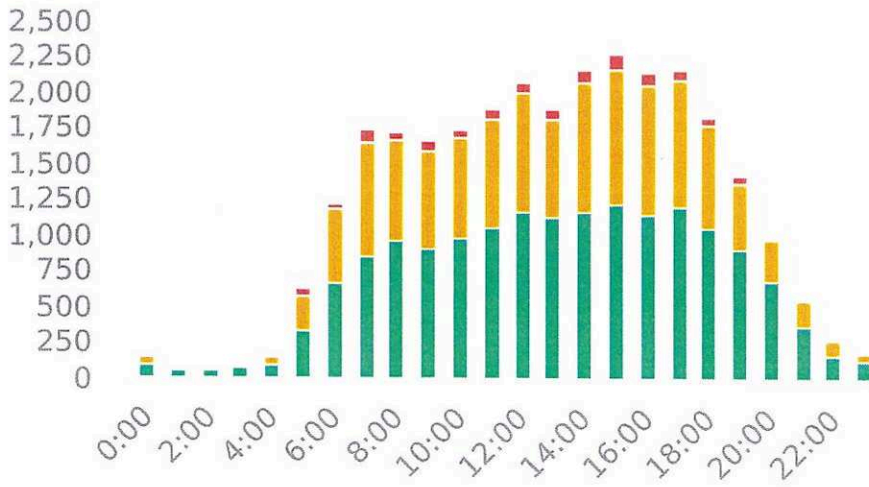
Minimum Speed: 10

Maximum Speed: 61

Display Mode: Speed Display

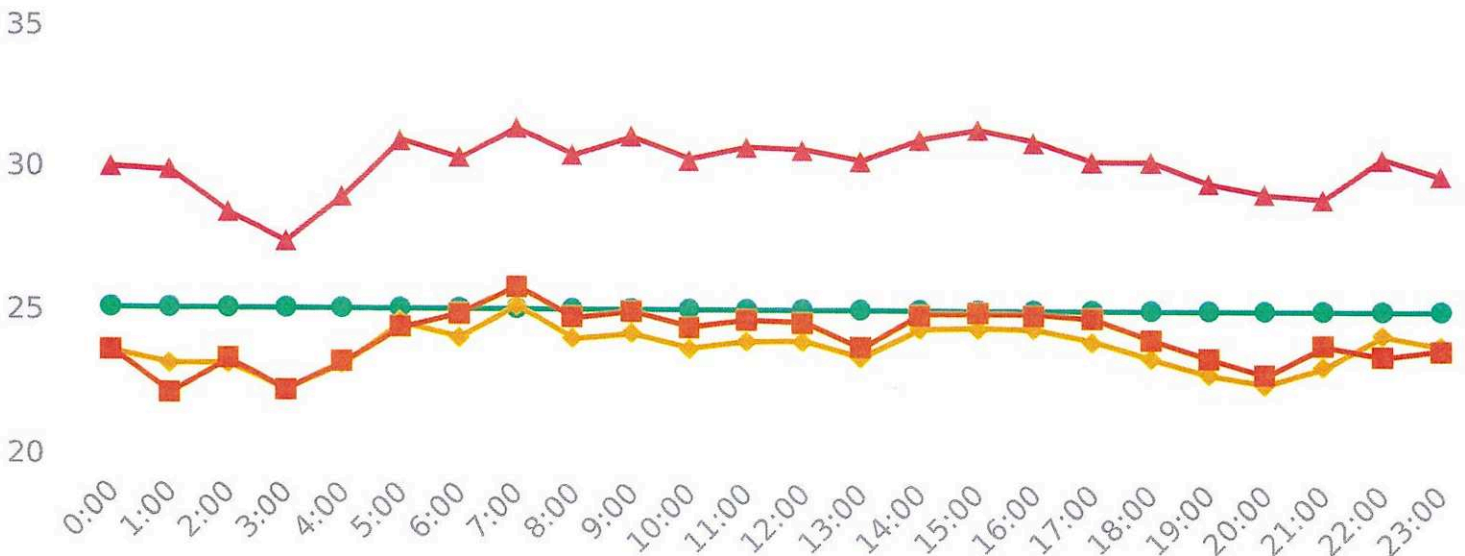
Average Volume per Day: 1948.5

Total Volume: 29228



● Violators ● Inside Threshold ● Compliant

● Vehicles Slowed ● Other



● Speed Limit ● Average Speed ● 50% Speed ● 85% Speed



Start: 2024-03-07

End: 2024-03-21

Times: 0:00:00-23:59:59

Violation Threshold: Speed Limit + 10

Speed Range: 1 to 150

Time	Sign Mode	Speed Limit	Total # Vehicles	Total # Violator	% Violator	Avg # Vehicles	Avg # Violators	Min Speed	Max Speed	Avg Speed	50% Speed	85% Speed	Sign Effectiveness
0:00	Speed Display	25	151	9	6.0%	10.8	0.6	10	38	23.5	23.5	30.0	43.2%
1:00	Speed Display	25	71	3	4.2%	5.1	0.2	10	48	23.1	22.0	29.8	43.8%
2:00	Speed Display	25	79	2	2.5%	6.1	0.2	10	41	23.1	23.2	28.4	48.2%
3:00	Speed Display	25	94	0	0.0%	6.7	0.0	10	35	22.2	22.2	27.4	57.6%
4:00	Speed Display	25	164	9	5.5%	11.7	0.6	10	47	23.1	23.1	29.0	47.6%
5:00	Speed Display	25	623	43	6.9%	44.5	3.1	10	45	24.5	24.3	30.9	46.9%
6:00	Speed Display	25	1224	48	3.9%	87.4	3.4	10	53	24.0	24.8	30.3	47.2%
7:00	Speed Display	25	1743	87	5.0%	124.5	6.2	10	52	25.1	25.8	31.3	50.0%
8:00	Speed Display	25	1727	56	3.2%	123.4	4.0	10	44	24.0	24.7	30.4	45.5%
9:00	Speed Display	25	1669	83	5.0%	119.2	5.9	10	55	24.2	24.9	31.1	43.0%
10:00	Speed Display	25	1733	56	3.2%	115.5	3.7	10	43	23.7	24.4	30.3	43.5%
11:00	Speed Display	25	1896	76	4.0%	126.4	5.1	10	45	23.9	24.7	30.7	44.4%
12:00	Speed Display	25	2080	83	4.0%	138.7	5.5	10	49	23.9	24.6	30.6	43.1%
13:00	Speed Display	25	1884	75	4.0%	125.6	5.0	10	61	23.4	23.7	30.3	44.3%
14:00	Speed Display	25	2164	91	4.2%	144.3	6.1	10	49	24.4	24.9	31.0	44.7%
15:00	Speed Display	25	2277	111	4.9%	151.8	7.4	10	50	24.4	24.9	31.4	44.0%
16:00	Speed Display	25	2156	106	4.9%	143.7	7.1	10	47	24.4	24.9	30.9	42.0%
17:00	Speed Display	25	2162	76	3.5%	144.1	5.1	10	47	24.0	24.7	30.2	44.6%
18:00	Speed Display	25	1835	61	3.3%	122.3	4.1	10	51	23.3	24.0	30.2	43.2%
19:00	Speed Display	25	1422	47	3.3%	94.8	3.1	10	45	22.8	23.4	29.5	44.8%
20:00	Speed Display	25	1003	30	3.0%	66.9	2.0	10	47	22.4	22.8	29.1	40.3%
21:00	Speed Display	25	580	22	3.8%	38.7	1.5	10	52	23.0	23.8	28.9	38.9%
22:00	Speed Display	25	291	20	6.9%	19.4	1.3	10	53	24.2	23.4	30.4	38.8%
23:00	Speed Display	25	200	10	5.0%	13.3	0.7	10	47	23.8	23.7	29.8	35.1%
Total Volumes/ Avg			29228	1204	4.1%	1984.9	81.9	10	61	23.7	24.0	30.1	44.4%
Total/Avg w/o Feedback			0	0	0	0.0	0.0	n/a	n/a	n/a	n/a	n/a	n/a
Total/Avg w/ Feedback			29228	1204	4.1%	1984.9	81.9	10	61	23.7	24.0	30.1	44.4%